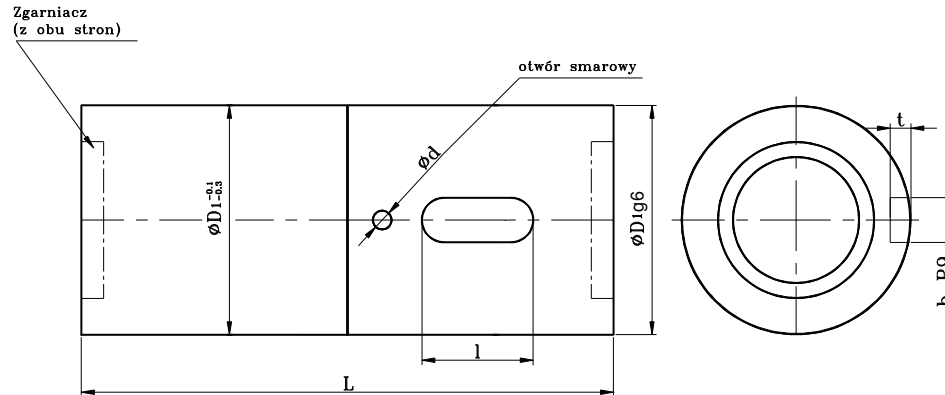
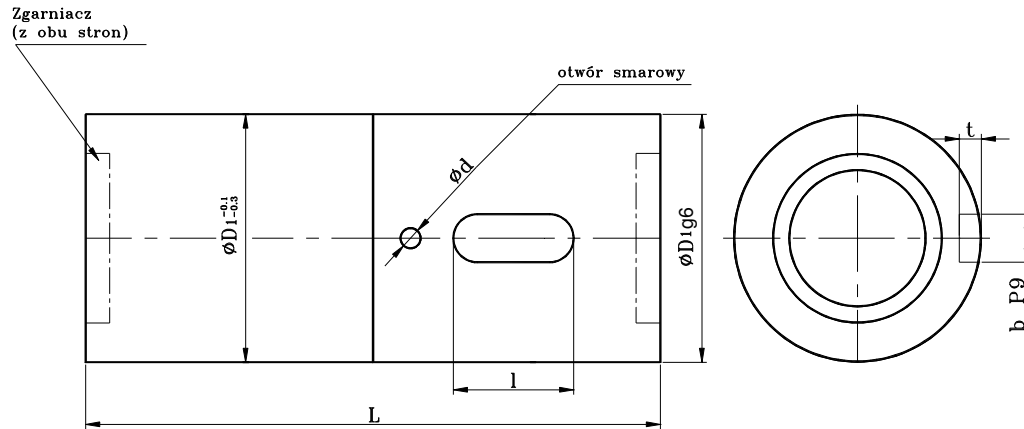


| Oznaczenie | Wymiary gwintu | | Średnica kulki D_k | Liczba Obiegów | Nośność dynam. C [daN] | Nośność statycz. Co [daN] | Sztywność R [daN/ μ m] |
|--------------|-------------------------|----------|----------------------|----------------|--------------------------|-----------------------------|------------------------------|
| | Średnica podział. d_0 | Skok p | | | | | |
| 3VNBC3 16x5 | 16 | 5 | 3.175 | 3 | 740 | 1250 | 20 |
| 3VNBC3 20x5 | 20 | 5 | 3.175 | 3 | 900 | 1780 | 39 |
| 4VNBC3 20x5 | | | | 4 | 1140 | 2390 | 52 |
| 3VNBC3 25x5 | 25 | 5 | 3.175 | 3 | 1100 | 2350 | 49 |
| 4VNBC3 25x5 | | | | 4 | 1290 | 3200 | 64 |
| 3VNBC3 25x6 | | 6 | 3.969 | 3 | 1320 | 2820 | 48 |
| 4VNBC3 25x6 | | | | 4 | 1680 | 3810 | 64 |
| 3VNBC3 25x10 | 10 | 3.969 | 3.969 | 3 | 1650 | 3260 | 49 |
| 3VNBC3 32x5 | 32 | 5 | 3.175 | 3 | 1140 | 3250 | 61 |
| 4VNBC3 32x5 | | | | 4 | 1470 | 4240 | 80 |
| 6VNBC3 32x5 | | | | 6 | 2100 | 6400 | 118 |
| 3VNBC3 32x6 | | 6 | 3.969 | 3 | 1550 | 3890 | 62 |
| 4VNBC3 32x6 | | | | 4 | 1950 | 5800 | 82 |
| 6VNBC3 32x6 | | | | 6 | 2770 | 7900 | 121 |
| 3VNBC3 32x8 | | 8 | 5.556 | 3 | 1890 | 4340 | 60 |
| 4VNBC3 32x8 | | | | 4 | 2380 | 5680 | 79 |
| 3VNBC3 32x10 | | 10 | 6.35 | 3 | 2680 | 5490 | 60 |
| 4VNBC3 32x10 | | | | 4 | 3470 | 7180 | 79 |
| 4VNBC3 40x5 | 40 | 5 | 3.175 | 4 | 1640 | 5380 | 98 |
| 6VNBC3 40x5 | | | | 6 | 2330 | 8020 | 144 |
| 4VNBC3 40x6 | | 6 | 3.969 | 4 | 2170 | 6670 | 99 |
| 6VNBC3 40x6 | | | | 6 | 3070 | 9700 | 146 |
| 4VNBC3 40x8 | | | | 8 | 5.556 | 4 | 2760 |
| 6VNBC3 40x8 | | 6 | 3990 | | | 12600 | 148 |
| 3VNBC3 40x10 | | 10 | 6.35 | 3 | 3100 | 7270 | 75 |
| 4VNBC3 40x10 | | | | 4 | 3970 | 9650 | 99 |
| 3VNBC3 40x12 | | | | 12 | 3100 | 7270 | 75 |
| 4VNBC3 50x5 | | 50 | 5 | 3.175 | 4 | 1780 | 7200 |
| 6VNBC3 50x5 | 6 | | | | 2530 | 11400 | 175 |
| 4VNBC3 50x6 | 6 | | 3.969 | 4 | 2450 | 8370 | 121 |
| 6VNBC3 50x6 | | | | 6 | 3480 | 13100 | 178 |
| 4VNBC3 50x8 | | | | 8 | 5.556 | 4 | 3100 |
| 6VNBC3 50x8 | 6 | | 4350 | | | 14450 | 177 |

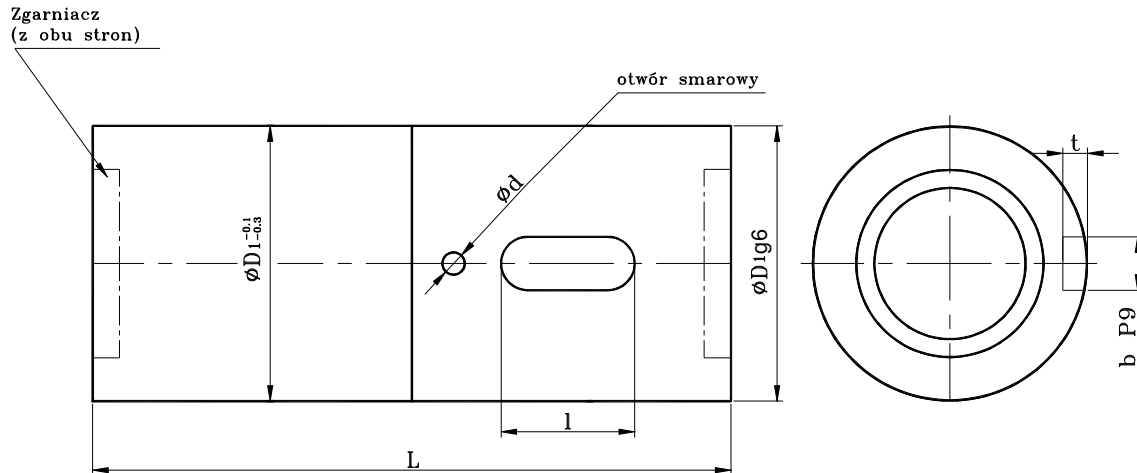


| Nakrętka | | | | Oznaczenie |
|----------|-----|---|--------------|--------------|
| D1 | L | d | b * t * l | |
| 36 | 76 | 3 | 4 * 2.5 * 12 | 3VNBC3 16x5 |
| 36 | 76 | 3 | 4 * 2.5 * 12 | 3VNBC3 20x5 |
| | 86 | | | 4VNBC3 20x5 |
| 40 | 78 | 3 | 4 * 2.5 * 12 | 3VNBC3 25x5 |
| | 88 | | | 4VNBC3 25x5 |
| 40 | 88 | 3 | 4 * 2.5 * 12 | 3VNBC3 25x6 |
| | 102 | | | 4VNBC3 25x6 |
| 40 | 122 | 3 | 4 * 2.5 * 12 | 3VNBC3 25x10 |
| 50 | 80 | 4 | 5 * 3 * 12 | 3VNBC3 32x5 |
| | 90 | | | 4VNBC3 32x5 |
| | 112 | | | 6VNBC3 32x5 |
| 50 | 88 | 4 | 5 * 3 * 12 | 3VNBC3 32x6 |
| | 102 | | | 4VNBC3 32x6 |
| | 126 | | | 6VNBC3 32x6 |
| 50 | 108 | 4 | 5 * 3 * 20 | 3VNBC3 32x8 |
| | 124 | | | 4VNBC3 32x8 |
| 50 | 126 | 4 | 5 * 3 * 20 | 3VNBC3 32x10 |
| | 148 | | | 4VNBC3 32x10 |
| 63 | 94 | 4 | 6 * 3.5 * 16 | 4VNBC3 40x5 |
| | 116 | | | 6VNBC3 40x5 |
| 63 | 106 | 4 | 6 * 3.5 * 16 | 4VNBC3 40x6 |
| | 130 | | | 6VNBC3 40x6 |
| 63 | 128 | 4 | 6 * 3.5 * 25 | 4VNBC3 40x8 |
| | 162 | | | 6VNBC3 40x8 |
| 63 | 130 | 4 | 6 * 3.5 * 25 | 3VNBC3 40x10 |
| | 152 | | | 4VNBC3 40x10 |
| 63 | 148 | 4 | 6 * 3.5 * 25 | 3VNBC3 40x12 |
| 75 | 94 | 4 | 6 * 3.5 * 18 | 4VNBC3 50x5 |
| | 116 | | | 6VNBC3 50x5 |
| 75 | 106 | 4 | 6 * 3.5 * 18 | 4VNBC3 50x6 |
| | 130 | | | 6VNBC3 50x6 |
| 75 | 128 | 4 | 6 * 3.5 * 28 | 4VNBC3 50x8 |
| | 162 | | | 6VNBC3 50x8 |

$i = 6$ dla $d_0 \leq 32$; $i = 8$ dla $d_0 > 32$



| Oznaczenie | Wymiary gwintu | | Średnica kulki D_k | Liczba obiegów | Nośność dynam. C [daN] | Nośność statycz. Co [daN] | Sztywność R [daN/ μ m] |
|---------------|-------------------------|----------|----------------------|----------------|--------------------------|-----------------------------|------------------------------|
| | Średnica podział. d_0 | Skok p | | | | | |
| 3VNBC3 50x10 | 50 | 10 | 6.35 | 3 | 3530 | 9450 | 93 |
| 4VNBC3 50x10 | | | | 4 | 4500 | 13700 | 122 |
| 6VNBC3 50x10 | | | | 6 | 6400 | 18800 | 180 |
| 3VNBC3 50x12 | | 12 | 7.938 | 3 | 4560 | 11200 | 92 |
| 4VNBC3 50x12 | | | | 4 | 5840 | 15100 | 122 |
| 3VNBC3 50x20 | | | | 20 | 7.938 | 3 | 4560 |
| 4VNBC3 63x6 | 63 | 6 | 3.969 | 4 | 2660 | 10800 | 146 |
| 6VNBC3 63x6 | | | | 6 | 3770 | 17000 | 215 |
| 4VNBC3 63x8 | | 8 | 5.556 | 4 | 3540 | 13200 | 149 |
| 6VNBC3 63x8 | | | | 6 | 4890 | 19020 | 220 |
| 4VNBC3 63x10 | | 10 | 6.35 | 4 | 5070 | 17900 | 154 |
| 6VNBC3 63x10 | | | | 6 | 7180 | 24900 | 226 |
| 4VNBC3 63x12 | | 12 | 7.938 | 4 | 6640 | 20100 | 151 |
| 6VNBC3 63x12 | | | | 6 | 9490 | 30600 | 222 |
| 3VNBC3 63x20 | | 20 | 9.525 | 3 | 8530 | 23650 | 147 |
| 4VNBC3 80x10 | | 80 | 10 | 6.35 | 4 | 5740 | 22200 |
| 6VNBC3 80x10 | 6 | | | | 8120 | 32500 | 275 |
| 4VNBC3 80x12 | 12 | | 7.938 | 4 | 7550 | 26120 | 189 |
| 6VNBC3 80x12 | | | | 6 | 10700 | 39200 | 278 |
| 3VNBC3 80x16 | 16 | | 9.525 | 3 | 7500 | 27450 | 187 |
| 4VNBC3 80x16 | | | | 4 | 12850 | 42600 | 246 |
| 3VNBC3 80x20 | 20 | | 9.525 | 3 | 9800 | 31900 | 187 |
| 4VNBC3 80x20 | | | | 4 | 12850 | 42600 | 246 |
| 4VNBC3 100x10 | 100 | 10 | 6.35 | 4 | 6800 | 31300 | 217 |
| 6VNBC3 100x10 | | | | 6 | 8780 | 40700 | 334 |
| 4VNBC3 100x12 | | 12 | 7.938 | 4 | 8560 | 40400 | 206 |
| 6VNBC3 100x12 | | | | 6 | 12000 | 50600 | 339 |
| 4VNBC3 100x16 | | 16 | 9.525 | 4 | 10800 | 46600 | 212 |
| 6VNBC3 100x16 | | | | 6 | 15300 | 69900 | 276 |
| 3VNBC3 100x20 | | 20 | 9.525 | 3 | 12020 | 41100 | 213 |
| 4VNBC3 100x20 | | | | 4 | 14100 | 54600 | 294 |



| Nakrętka | | | | Oznaczenie |
|----------|-----|---|---------------|---------------|
| D1 | L | d | b * t * l | |
| 75 | 130 | 4 | 6 * 3.5 * 28 | 3VNBC3 50x10 |
| | 152 | | | 4VNBC3 50x10 |
| | 194 | | | 6VNBC3 50x10 |
| 75 | 148 | 4 | 6 * 3.5 * 32 | 3VNBC3 50x12 |
| | 174 | | | 4VNBC3 50x12 |
| 75 | 224 | 4 | 6 * 3.5 * 32 | 3VNBC3 50x20 |
| 90 | 106 | 5 | 8 * 4 * 28 | 4VNBC3 63x6 |
| | 130 | | | 6VNBC3 63x6 |
| 90 | 128 | 5 | 8 * 4 * 28 | 4VNBC3 63x8 |
| | 162 | | | 6VNBC3 63x8 |
| 90 | 152 | 5 | 8 * 4 * 28 | 4VNBC3 63x10 |
| | 194 | | | 6VNBC3 63x10 |
| 90 | 174 | 5 | 8 * 4 * 32 | 4VNBC3 63x12 |
| | 224 | | | 6VNBC3 63x12 |
| 95 | 224 | 5 | 8 * 4 * 50 | 3VNBC3 63x20 |
| 105 | 152 | 5 | 10 * 4.5 * 28 | 4VNBC3 80x10 |
| | 194 | | | 6VNBC3 80x10 |
| 105 | 174 | 5 | 10 * 4.5 * 32 | 4VNBC3 80x12 |
| | 224 | | | 6VNBC3 80x12 |
| 125 | 196 | 5 | 10 * 4.5 * 40 | 3VNBC3 80x16 |
| | 220 | | | 4VNBC3 80x16 |
| 125 | 224 | 5 | 10 * 4.5 * 50 | 3VNBC3 80x20 |
| | 266 | | | 4VNBC3 80x20 |
| 125 | 152 | 5 | 10 * 4.5 * 28 | 4VNBC3 100x10 |
| | 194 | | | 6VNBC3 100x10 |
| 130 | 174 | 5 | 10 * 4.5 * 32 | 4VNBC3 100x12 |
| | 224 | | | 6VNBC3 100x12 |
| 140 | 220 | 5 | 10 * 4.5 * 40 | 4VNBC3 100x16 |
| | 288 | | | 6VNBC3 100x16 |
| 150 | 224 | 5 | 10 * 4.5 * 50 | 3VNBC3 100x20 |
| | 266 | | | 4VNBC3 100x20 |

$i = 6$ dla $d_0 \leq 32$; $i = 8$ dla $d_0 > 32$